

Project: Saksham

INTEGRATED INCLUSIVE MODEL FOR
CHILDREN & YOUTH WITH DISABILITIES



**ADITYA BIRLA
CAPITAL**

PROTECTING INVESTING FINANCING ADVISING

- Project Name : Saksham
- Purpose : This project is to make Children & Youth with disability **CAPABLE** to lead a meaningful and dignified life
- Implementation area : 72 Urban slums of Bhubneshwar
- Implementation partner : Swabhiman



Why ?

- Baseline study done in urban slum revealed:

School Level

- These children (CwD) enrolled in Govt. schools but rarely went to school or visited on specific event days. (58% CwD: Out of school, 42% CwD: were at home or loitered at street)
- School accessibility for disable children – ZERO
- Capability and attitude of teachers to handle CwD: NIL/Apathetic

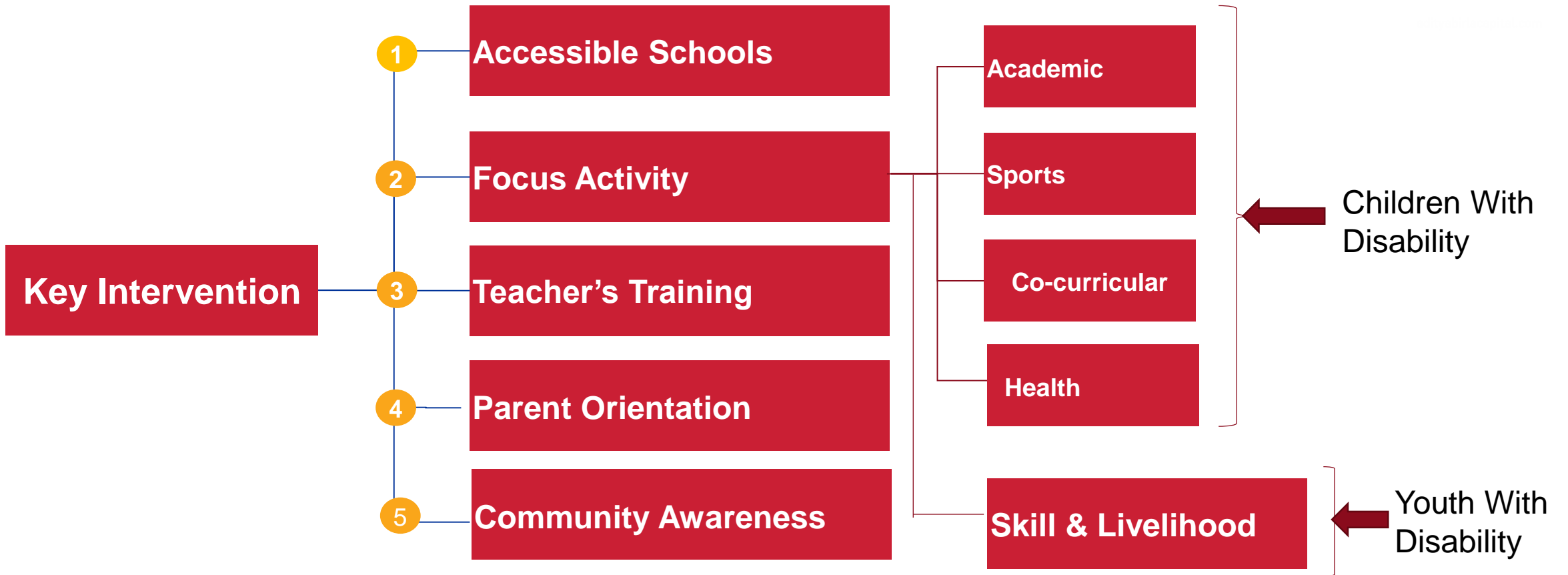
Parent & Society

- These CwD were ignored by society and parents
- They were from poorest families
- Ownership of parents towards development of CwD were – Negligible

Aspiration

- **Children with disability** willing to study but they need handholding support
- **Youth with disability** is willing to work and earn money but there was no support system

Intervention: Fulfilling Gap ?



Impact Stories

- **Manisha Priyadarshani – Educational Excellence**
- **Swapna Rani Swain – Livelihood**

Manisha Priyadarshini



12 year old Manisha Priyadarshini was deserted by her father at birth because she was a girl and she was disabled.

- She is a **high support** need person who **has lower body paralysis**.
- Afraid of being asked for monetary support, friends and families closed their door to both Manisha and her mother. She was shy girl.

Intervention

- She was enrolled in 2016 in this project, was studying in class III that time
- She was given regular **physiotherapy**, provided a **wheelchair**, and given **academic support**. She got **dance, music, art** and Yoga classes at ICRC.

Impact of Saksham

- She **stood first** in her class in 2018 and 2019.
- In 2019, she **stood first entire Khordha district in Jawahar Navodaya Vidyalaya entrance test for class VI**
- She has won over **8 inter-school competitions in dance and art**.



Swapna Rani



25 years old Swapna Rani Swain, residing in Salia Sahi slum area is an orthopedically challenged young woman. Her father and mother were completely distressed about the future of Swapna.

Intervention

In 2016 she was enrolled during our baseline assessment and under the livelihood support component she was provided :

- skill development program on being a entrepreneur; management of a shop;
- Materials support of Rs. 10000/- for her small shop at her house.
- Through regular handholding support
- she was again linked with another support of Rs.15000/- from PNB through the project.



Impact

- Earns around Rs. 10- 12K/- per month.
- She is more confident and trying to enhance it further by adding more consumables and a refrigerator.
- Her bus pass, train pass and bank linkage were done through the project.

Why this project deserve recognition?

| Changes brought in | Details |
|---|--|
| Multi-stakeholder model | Co-owned and co-created model : <ul style="list-style-type: none">• NGO• Corporate• Govt. education deptt. (office bearers)• Parents |
| Children with disability (CwD) | Significant improvement in: <ul style="list-style-type: none">• One to one mentoring and monitoring• School enrolment & 100% retention• Academic & extra curricular performance (44% students scoring >50% marks) |
| Youth with disability (YwD) (out of school children, 18Yrs+) | <ul style="list-style-type: none">• Skill training & job linkage• Sustained handhold for six months• High success rate(earning): close to 60% trainee not only surviving but thriving |

Design of intervention

How ?

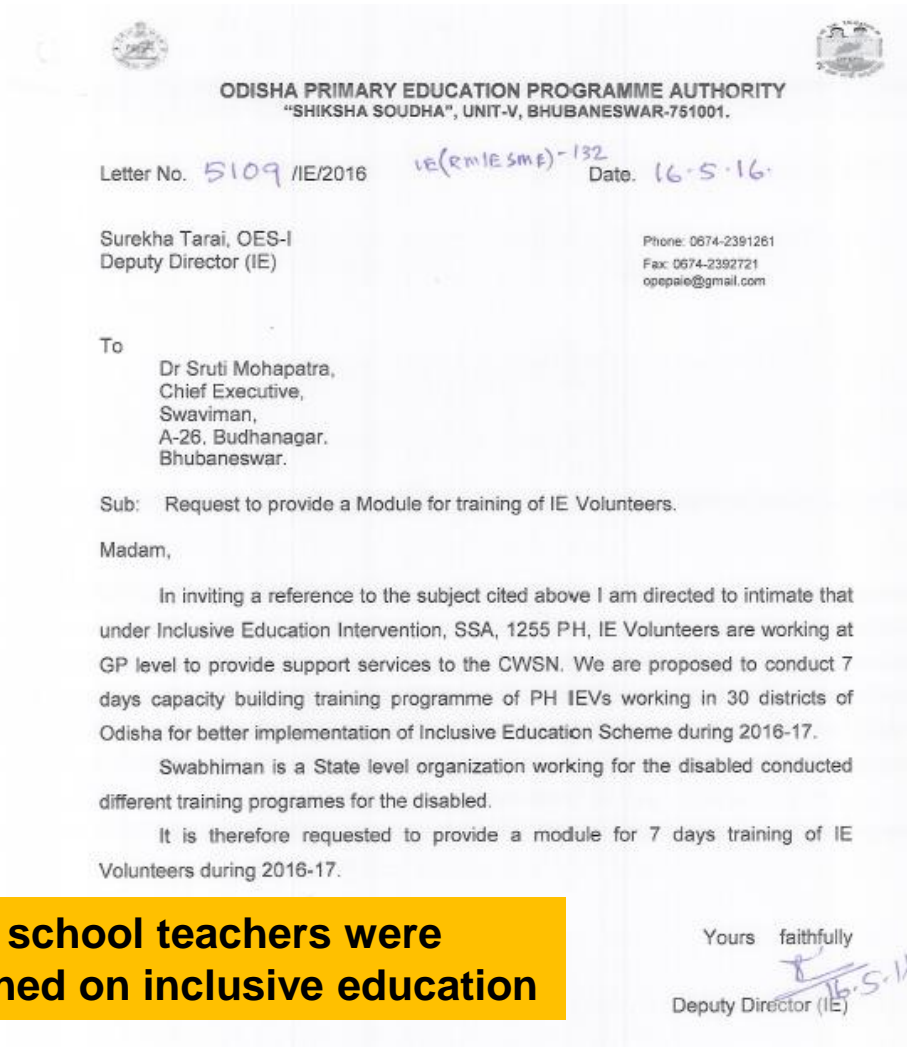
- Project is being implemented through eight **ICRCs (Inclusive Child Resource Centre)** which serves single window delivery to fulfil all needs of CwD & YwD
- The room for ICRC is provided by School and Mass Education Department GoO in government schools
- Each CwD, assigned a mentor to monitor the academic and extra curricular activity which is provided in ICRC after school hour



Alignment & leveraging Govt. schemes:

Alignment & leveraging Govt. schemes:

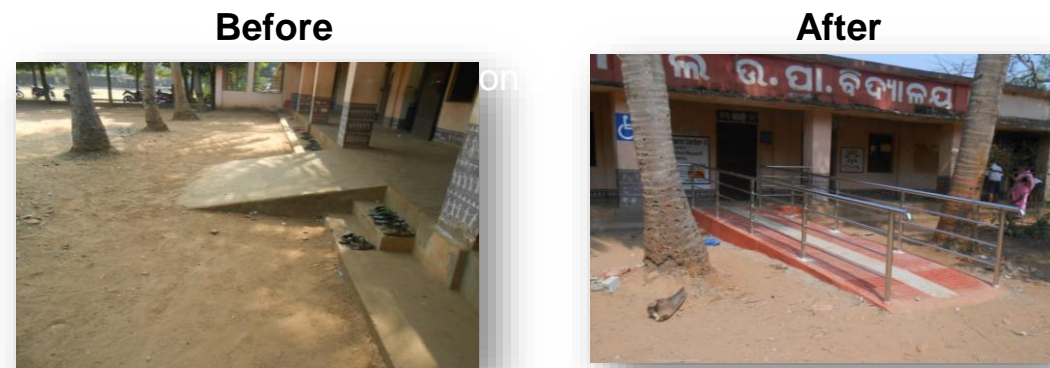
1 Request letter from Odisha Govt. on: Proving module of training & capacity building on IE



700 school teachers were trained on inclusive education

2 Disable friendly school (Accessibility): Before Saksham there was ZERO accessibility & NOW:

| Accessible Structures | Numbers of schools | Investment |
|-----------------------|--------------------|---|
| Ramps with Handrails | 59 | Approx. Rs.2 Cr. spent by Odisha Govt to make school accessible |
| Barrier free toilets | 33 | |
| Tactile Tiles | 57 | |



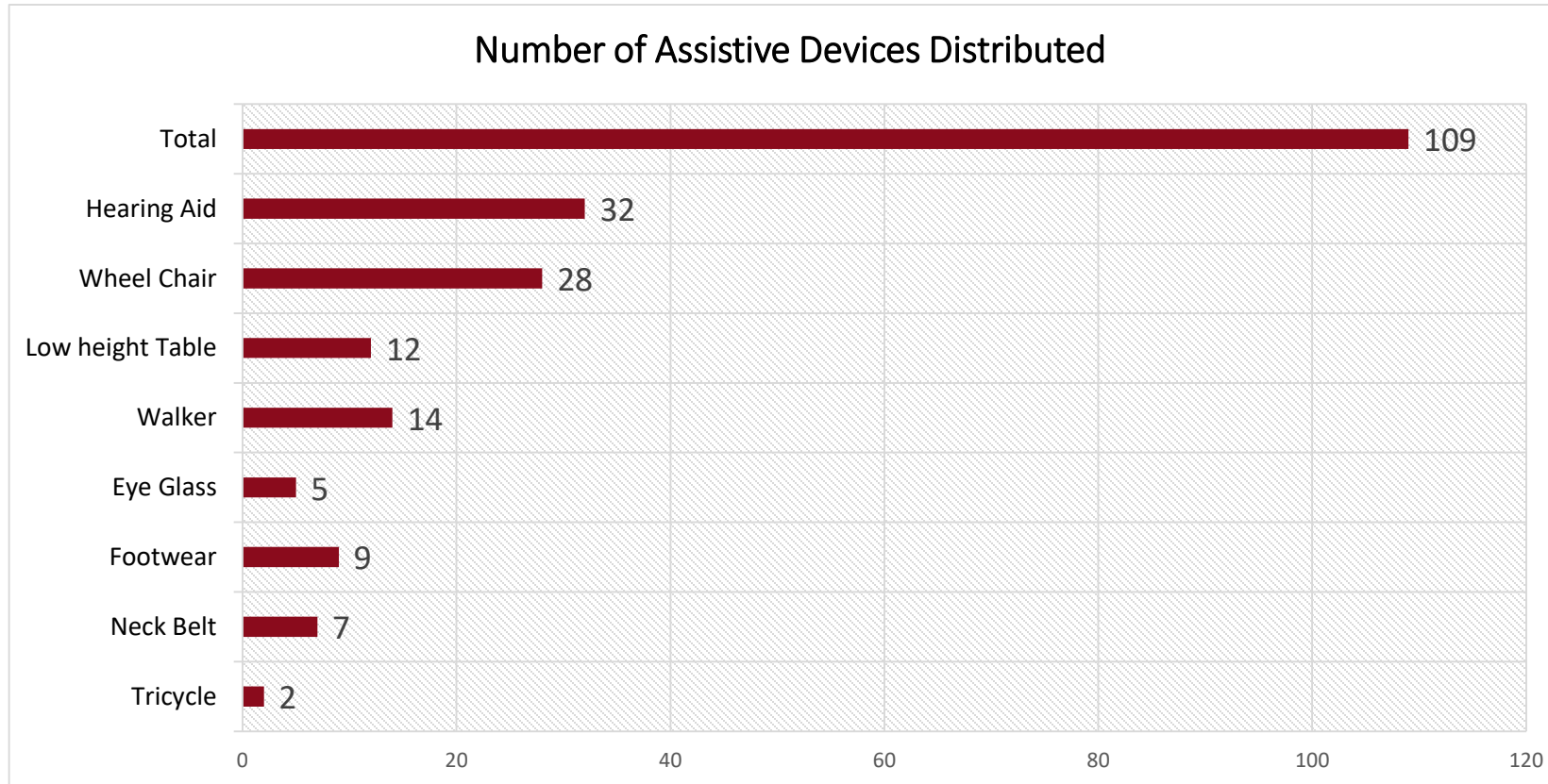
Mumtaz Ali Nodal High School

Impact on beneficiaries: Children With Disability

Beneficiary details:

| Sr.No. | Type of disability | Count of children |
|--------|--------------------------------|-------------------|
| 1. | Cerebral palsy (CP) | 17 |
| 2. | Hearing impaired | 66 |
| 3. | Speech stammering | 9 |
| 4. | Orthopedic Challenged | 79 |
| 5. | Low vision & visually impaired | 31 |
| 6. | Multiple Disabilities | 52 |
| 7. | Mentally Challenged | 66 |
| 8. | Autism & Learning Disability | 8 |
| Total | | 328 |

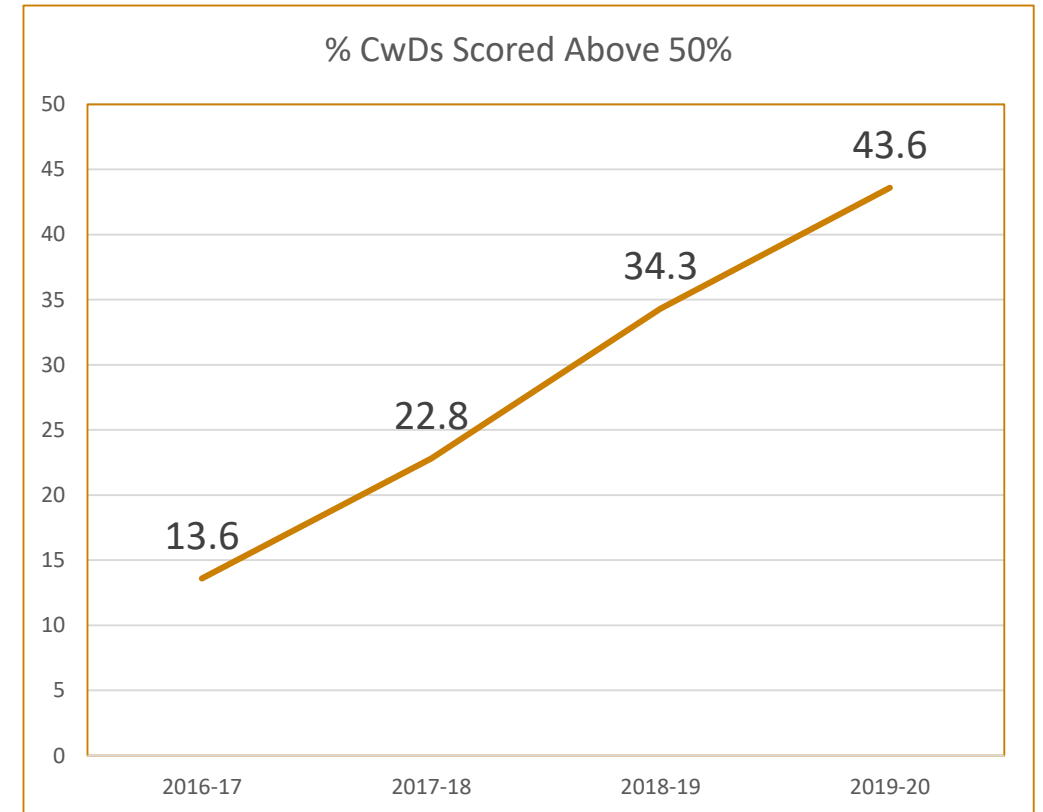
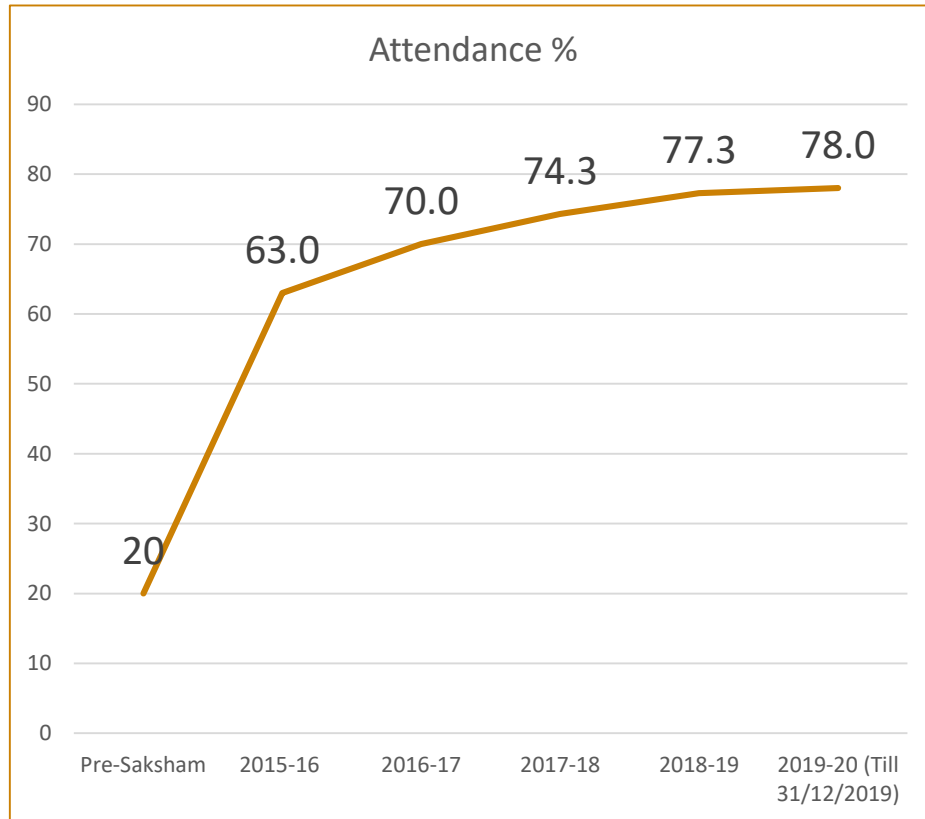
Assistive device to :



Academic Performance:

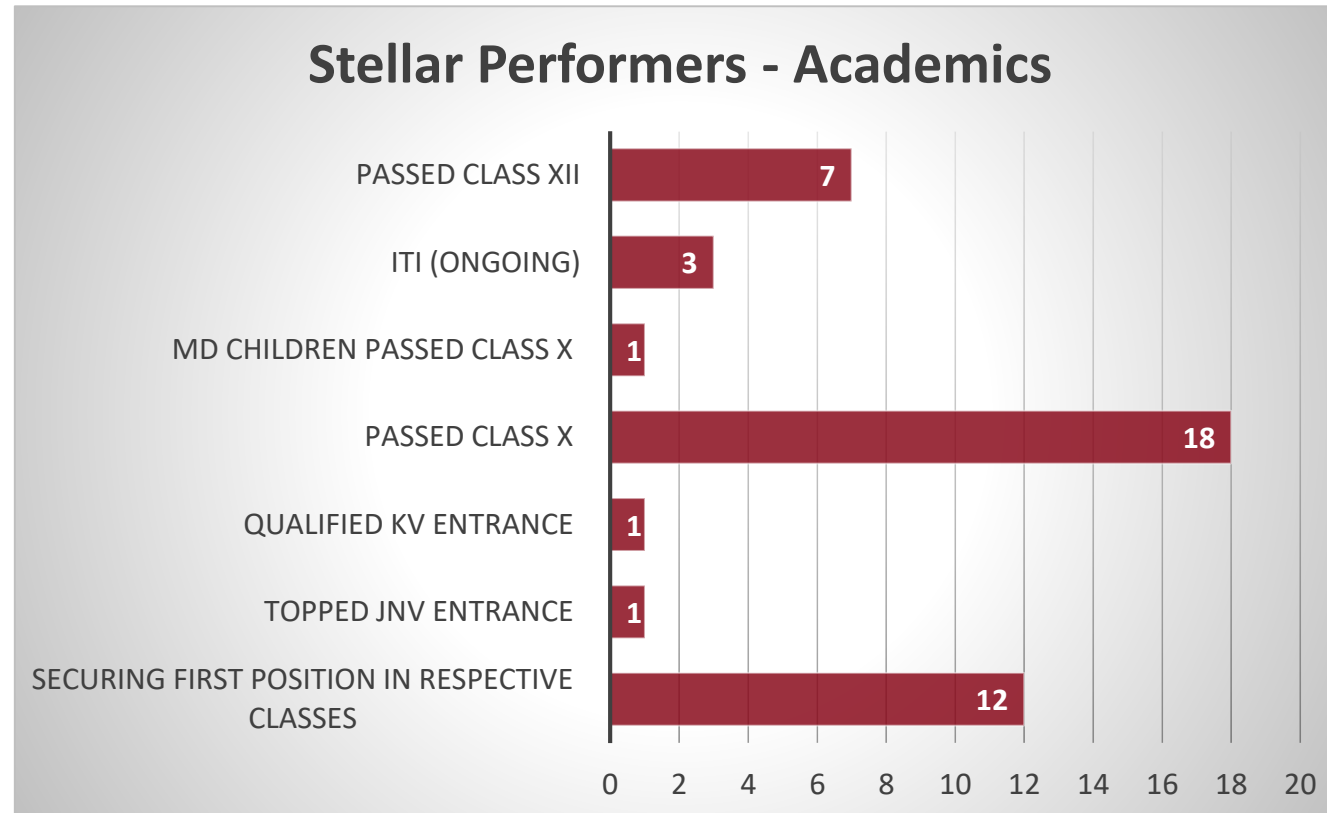


Academic Development of Children



Stellar Performers

- Passed Class X
- Topped Jawahar Navodaya Vidyalaya (JNV) Entrance
- Qualified Kendriya Vidyalaya (KV) Entrance



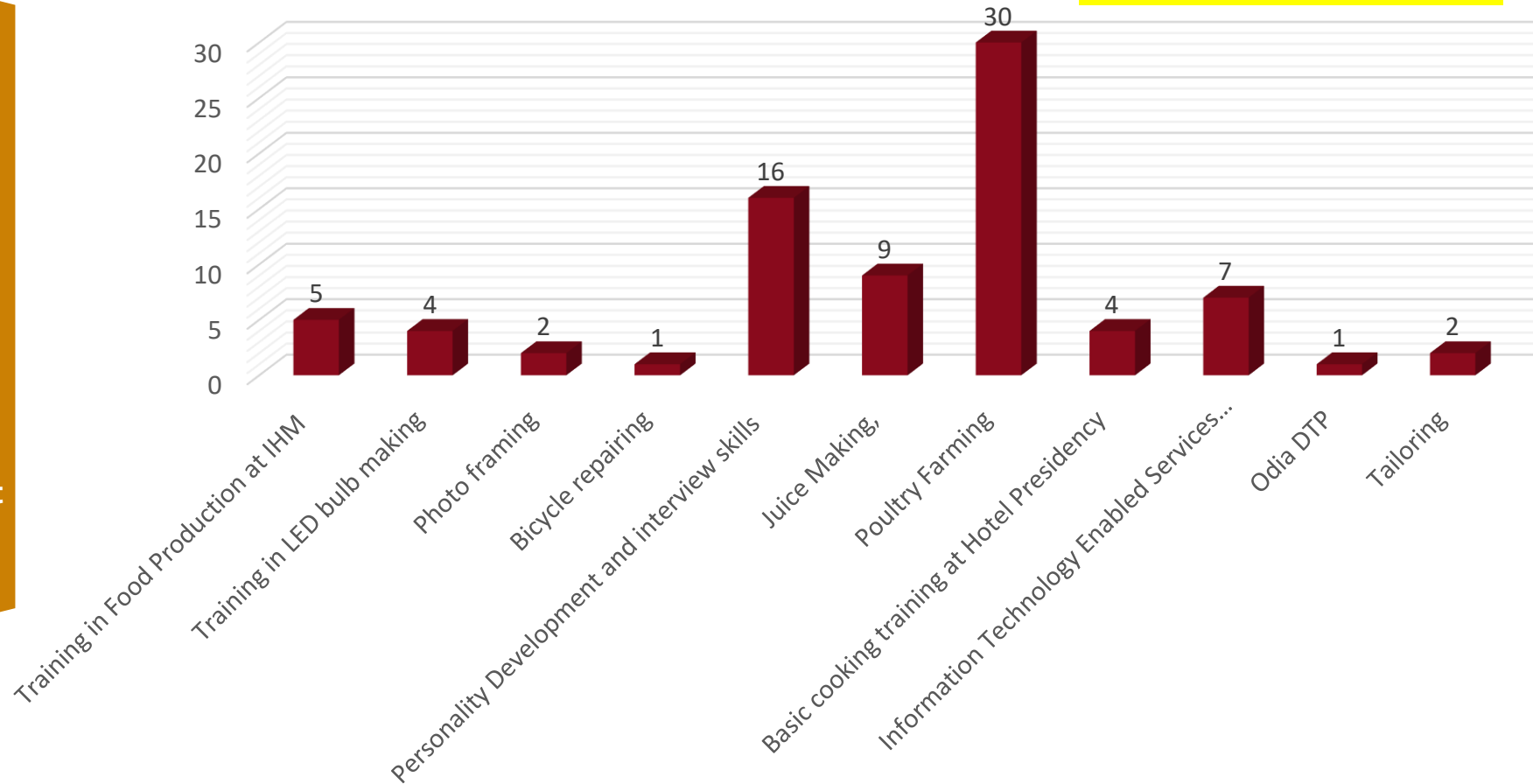
Impact on beneficiaries: Youth With Disability

Livelihood Enhancement

- Skill Development
- Job Linkages
- Bank Linkages for Loan
- Self Employment kit
- Market linkag

Training in Various Trades in Numbers

No. of YwD skilled :81



• No. of vocationally trained YwD earning in rang of Rs. 2k to 7k: 46

Thanks